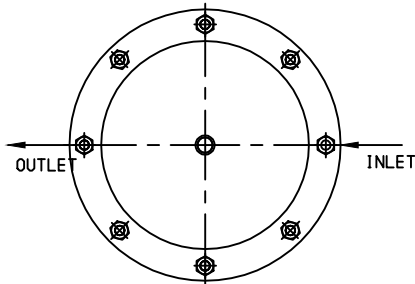


ALL DIMENSIONS REFERENCE

26-10XX-XX-901A



**PORTING CONFIGURATION**

**26-1000 SERIES REGULATOR**

SPRING LOADED, HAND OPERATED, PRESSURE REDUCING, WITH INTEGRAL SELF RELIEVING VENT VALVE.

**MODIFICATION FEATURES:**

- 15000 INLET
- AIR ACTUATED
- NON-VENTING
- CV=.3 (BALANCED VALVE)
- NO FILTER
- O-RINGS: EP
- TEMPERATURE: -40°F TO +185°F (-40°C TO +85°C)
- BACK-UP RINGS: VESPEL SP1 ON MAIN VALVE
- THICKER WALL ON BODY (Ø3.75)
- THICKER BACK-UP SENSOR
- BODY: JIS 316 SST OPTION (CUSTOMER SUPPLIED)
- SENSOR BACK-UP: JIS 316 SST OPTION (CUSTOMER SUPPLIED)
- SENSOR: JIS 316 SST OPTION (CUSTOMER SUPPLIED)
- SEAT RETAINER: JIS 316 SST OPTION (CUSTOMER SUPPLIED)

**GENERAL SPECIFICATIONS:**

- INLET PRESSURE, SEE TABLE I
- OUTLET PRESSURE, SEE TABLE II
- DESIGN PROOF PRESSURE, 150% OF RATED PRESSURE
- PRESSURE RATING, PER CRITERIA OF ANSI/ASME B31.3
- OPERATING TEMPERATURE: -40°F TO +185°F (-40°C TO +85°C)
- LEAKAGE: BUBBLE TIGHT
- FLOW CAPACITY (CV): .3
- WEIGHT: APPROXIMATELY 6 LBS
- MAX. OPERATING TORQUE: .45 IN.-LBS.

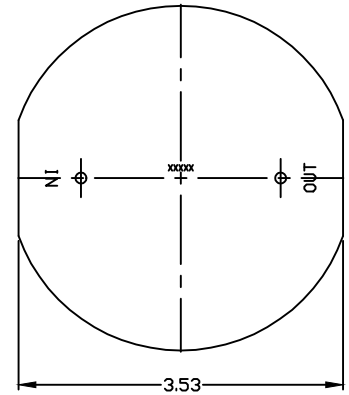
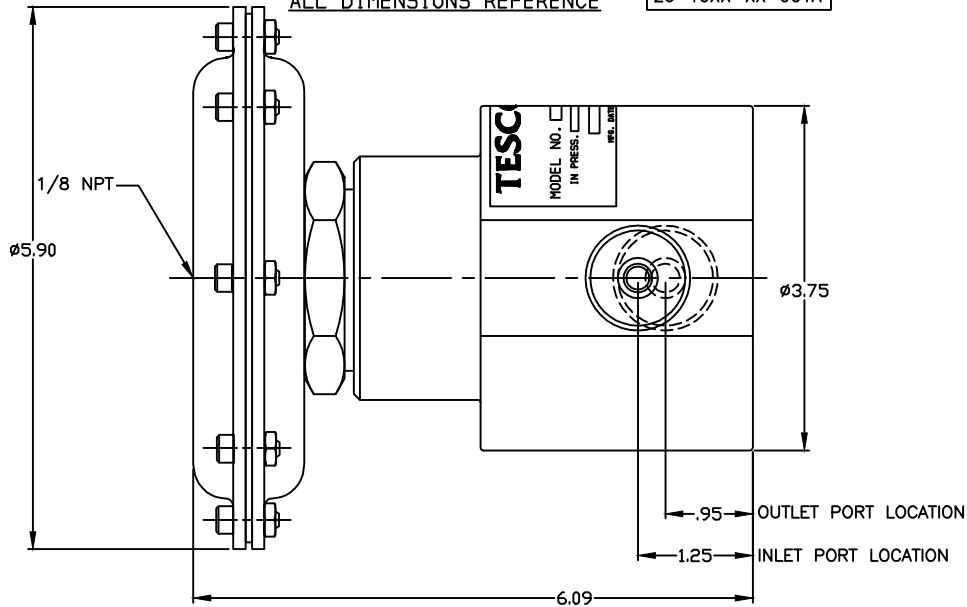
**MATERIALS CONTACTING LINE MEDIA:**

- SEAT, MAIN VALVE: VESPEL
- SEAT, VENT, NONE
- O-RING: EP
- GUIDE: PTFE
- BACK-UP RING: PCTFE
- VESPEL SP1 ON MAIN VALVE

- FILTER: NONE
- BODY: SEE TABLE I
- REMAINING PARTS: 300 SERIES SST

**ASSEMBLY INFORMATION:**

FOR ASSEMBLY OF THIS UNIT USE SPEC: A4984-62



SERIES NUMBER: 26-10J0-49-901A  
 MODIFICATION NUMBER: 49  
 AIR ACTUATOR: 901A

TABLE I	DASH NO.	BODY, SENSOR, SENSOR BACK-UP & SEAT RETAINER MATERIAL	MAX. INLET PRESSURE
	J	JIS 316 SST	15000 PSI

TABLE II	DASH NO.	OUTLET PRESSURE
	0	300-15000 PSI
	9	200-10000 PSI
	2	50-6000 PSI

TABLE IV	DASH NO.	INLET & OUTLET PORT SIZE
	9	9/16

TABLE III	DASH NO.	INLET & OUTLET PORT TYPE
	4	AMINCO

**NOTES:**

- PRESSURE AT WHICH REGULATOR IS USED MUST BE COMPATIBLE WITH THE PRESSURE RATING OF THE REGULATOR AND PORT SIZE/TYPE PROVIDED.

<p><b>TESCOM CORPORATION</b>                  INDUSTRIAL CONTROLS DIVISION                  BLK RIVER, MN USA</p>		<p>MATERIAL: _____</p>	
<p>AG 12-16-15 51514-15 JJ WRB                  AF 11-13-15 51446-15 DRM TWL                  AE 9-22-15 51148-15 EWN WRB                  AD 5-19-14 11898-14 DRM TWL                  AC 3-6-14 70270-14 SKO TWL                  AB 2-25-14 70229-14 DRM TWL                  AA 10-22-13 71203-13 DRM TWL                  A 8-14-13 13158-13 DRM TWL</p>		<p>FINISH: _____</p>	
<p>UNLESS OTHERWISE SPECIFIED:                  .0 ± .020 ANGLES: ±1°                  .00 ± .010                  .000 ± .005                  SURFACE ROUGHNESS: 100/                  CORNER &amp; FILLET RADII: .005-.020                  THREADS: CLASS 2                  REMOVE ALL BURRS</p>		<p>DRAWN BY: _____ CHECKED BY: _____ APPROVED BY: _____                  DRM 8-13-13 TWL 8-20-13 TWL 8-20-13</p>	
<p>REV. DATE ECO NO. BY: APPR</p>		<p><b>INSTALLATION INFO.</b></p>	
<p>REVISIONS</p>		<p>SCALE: 1:1 SIZE NUMBER 26-10XX-XX-901A                  CODE NO. 13669 SHT. 1 OF 1</p>	
<p>REFERENCE DRAWING(S)</p>		<p>DRAWING MADE IN THIRD ANGLE PROJECTION (DO NOT SCALE DRAWING)</p>	